

MXL Membranes

MXL

ADVANCED L ADPATH AIL

Club Race LP Membrane Sails

The all Aramid Advanced Load Path Membrane for Club Race application - sails under 45 square meters. MXL Club incorporates all of the technology developed for our advance load path sails but is uniform with an all aramid fiber content. These sails are super smooth with advanced resistance to stretch for shape stability.



MXL

ADVANCED L ADPATH AIL

Multi Panel Membrane Sails

This range of membranes is available for sails up to 45 square meters but incorporates all the options available in our Wide Panel membranes. The Multi-Panel sails can include a wide range of fiber content including Carbon and Technora. These sails are available with taffeta, single layer, double sided or internal core.



MXL

ADVANCED L ADPATH AIL

Wide Panel Membrane Sails

The MXL Wide Panel sails are truly custom, available in any panel width and fibers combined with taffeta availability. These membranes can incorporate custom load path layouts as specified by the sailmaker and are our most technically advanced membrane



MXL Membranes

MXL Surface Types

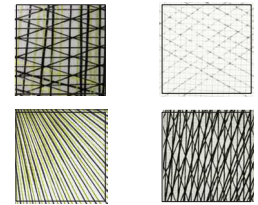
MXL Surface Styles

MXL Wide and Multi panel membrane sails are available in four different surface types allowing sailmakers to offer the most suitable membrane sail to their customers.

MXL - GP: film/film

Film to film sails:

Top of the line race sails in a film/ film configuration. MXL GP Race is available for modern skiffs right up to the maxi racer. Flexible choice of hi-tech fibres and scrim to get your own look and specification. Film thickness varies between 1 and 3 mil (12 - 36 micron) depending on sail size.



MXL - 1T : single taffetas

Film surface on one side and Taffeta on the other:

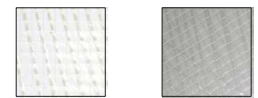
The single taffeta is the ideal choice for the cruiser racer. The Taffeta adds durability and longevity whilst still with a great hi tech look. The standard 75 gram taffeta can be upgraded to a Gossamer light 40 gram.



MXL - 2T : double taffeta

Taffeta on both sides of the sail:

MXL double taffeta is the ultimate cruising product for the knowledgeable cruiser. The sail is protected by a rugged taffeta exterior in white or light grey with other colours available on request.



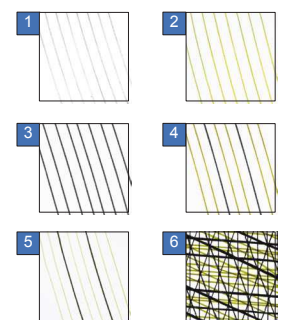
MXL - TC : taffeta core

A film/film load path membrane sail with a 40 gsm taffeta sandwiched between the external film and Fibre layers giving a softer hand and increased durability over typical film/film only sails. Available with a grey or white taffeta. Grey taffeta is suggested for black (Carbon and Technora) fibre, or black / Kevlar mix fibre sails, and white taffeta for Polyester / Pentex or Vectran fibre sails.

MXL Fibre, Taffeta and Scrim

Large Variety of Fibres Available

- | | | | |
|--------------------|---|----------------------|---|
| • Polyester | | • Technora / Aramid | 4 |
| • Pentex | 1 | • Vectran / Technora | 5 |
| • Aramid (Gold) | 2 | • Carbon / Aramid | 6 |
| • Technora (Black) | 3 | • Carbon / Technora | |
| • Vectran | | • Carbon / Vectran | |
| | | • Carbon | |



Scrim, film, taffeta options

- | | |
|---|---|
| • Upgrade polyester scrim to Technora X Ply Scrim | • Upgrade to 40 gsm gossamer light taffeta |
| • Downgrade Technora X-Ply scrim to Polyester | • Change to Grey Taffeta - no charge |
| • Upgrade to 100% UV film (clear only) | • Any colour to special order - ask for quote |
| • Upgrade from clear to Grey tinted film | |

Warranty

MXL Sails are guaranteed against faulty workmanship - subject only to proper maintenance and being used in appropriate wind conditions.

MXL Mainsail Membranes

Standard

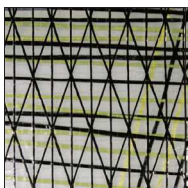
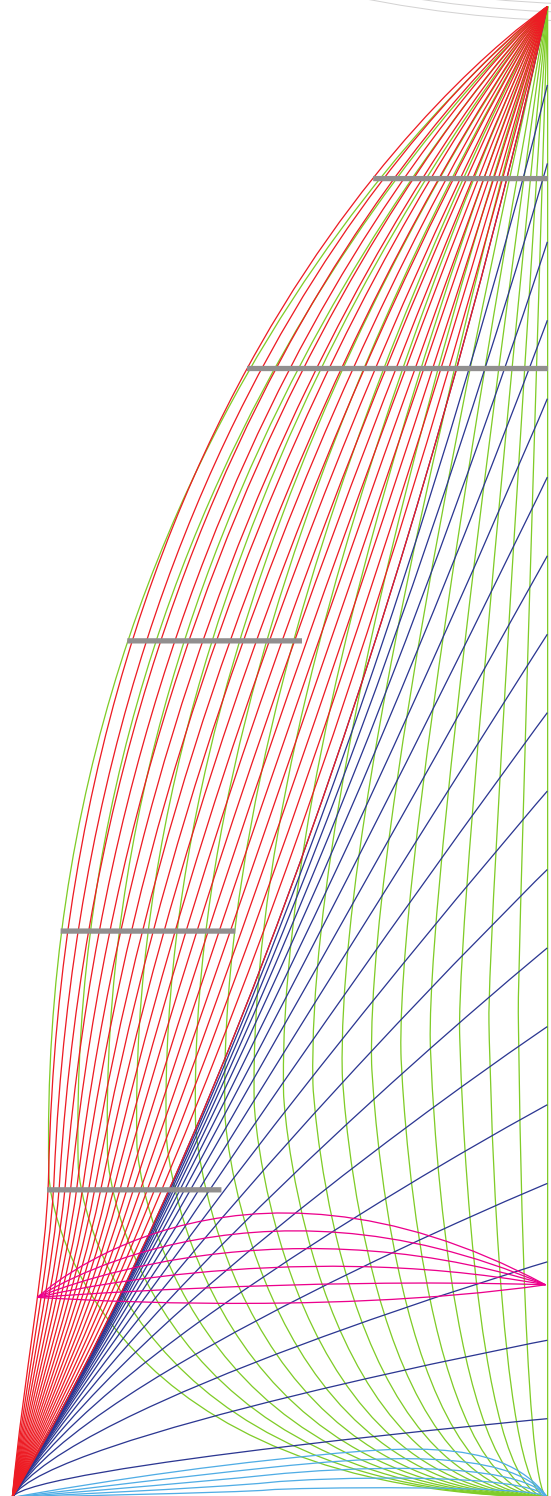
MXL

ADVANCED L ADPATH AIL

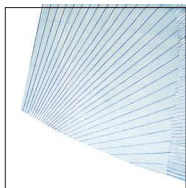
Custom Membrane Sails

Standard Features of MXL Mainsails:

- Top Full Batten - Balance short
- Tapered Vinylester battens
- Cunningham
- Strung laminated corner patches
- Alloy headboard
- Rutgerson Super rings in reefs (carbon SR rings with carbon sails)
- Drawstring carry bag
- Spectra webbing reinforcements
- Vectran leech lines
- Draft Stripes and Tell Tales
- Supplied loose spreader patches
- Bolt rope or standard slides
- Ultrabonded Seams reinforced with sewing on Taffeta faced surfaces



Fibre Close up



Strung Patch



Reef at Luff



Luff Box and Roller Slide



Leech Batten End



Headboard Detail

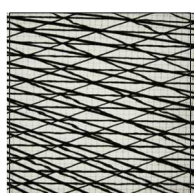
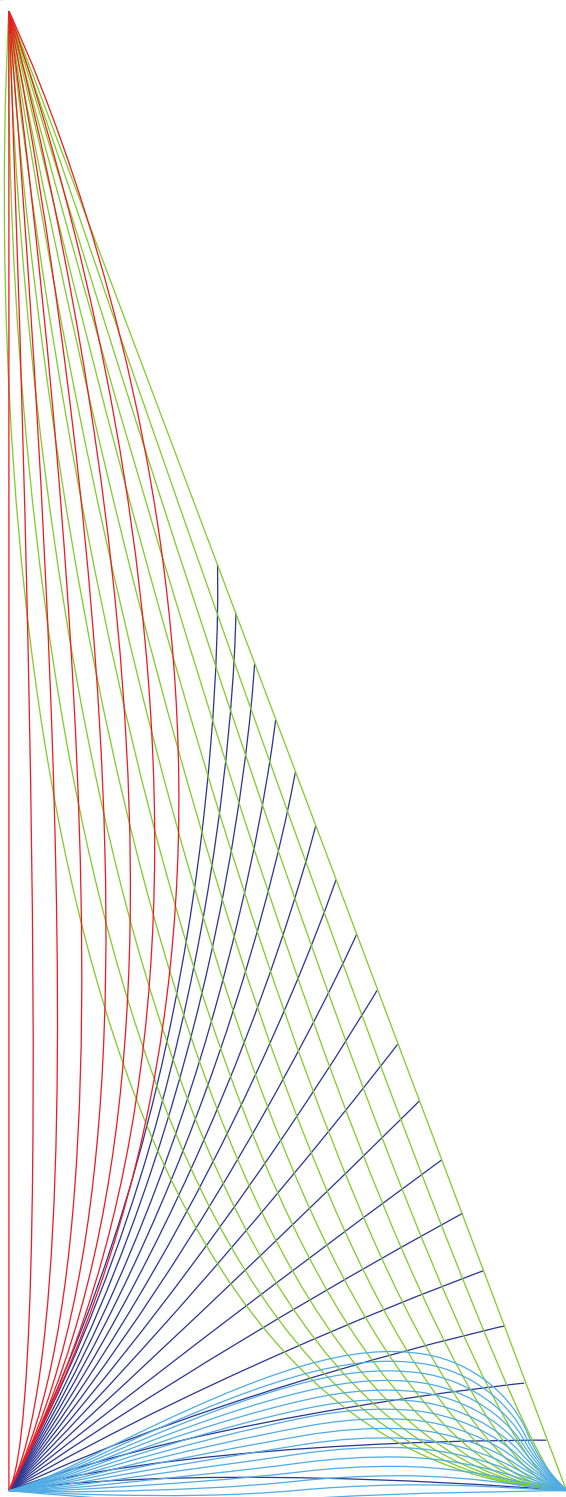
MXL Headsail Membranes

Standard

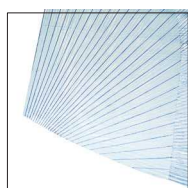
MXL
ADVANCED L ADPATH AIL Custom Membrane Sails

Standard Features of MXL Headsails:

- Strung laminated corner patches
- Stainless O Ring or Spectra webbing at corners
- Drawstring carry bag
- Spectra webbing reinforcements
- Vectran leech lines
- Draft Stripes and Tell Tales
- Tell Tales window
- Luff tape or brass hanks
- Supplied loose spreader patches
- Top Full Batten
- Ultrabonded Seams reinforced with sewing on Taffeta faced surfaces



Fibre Close up



Strung Patch



Clew Finishing



Head Finishing



Tack Finishing